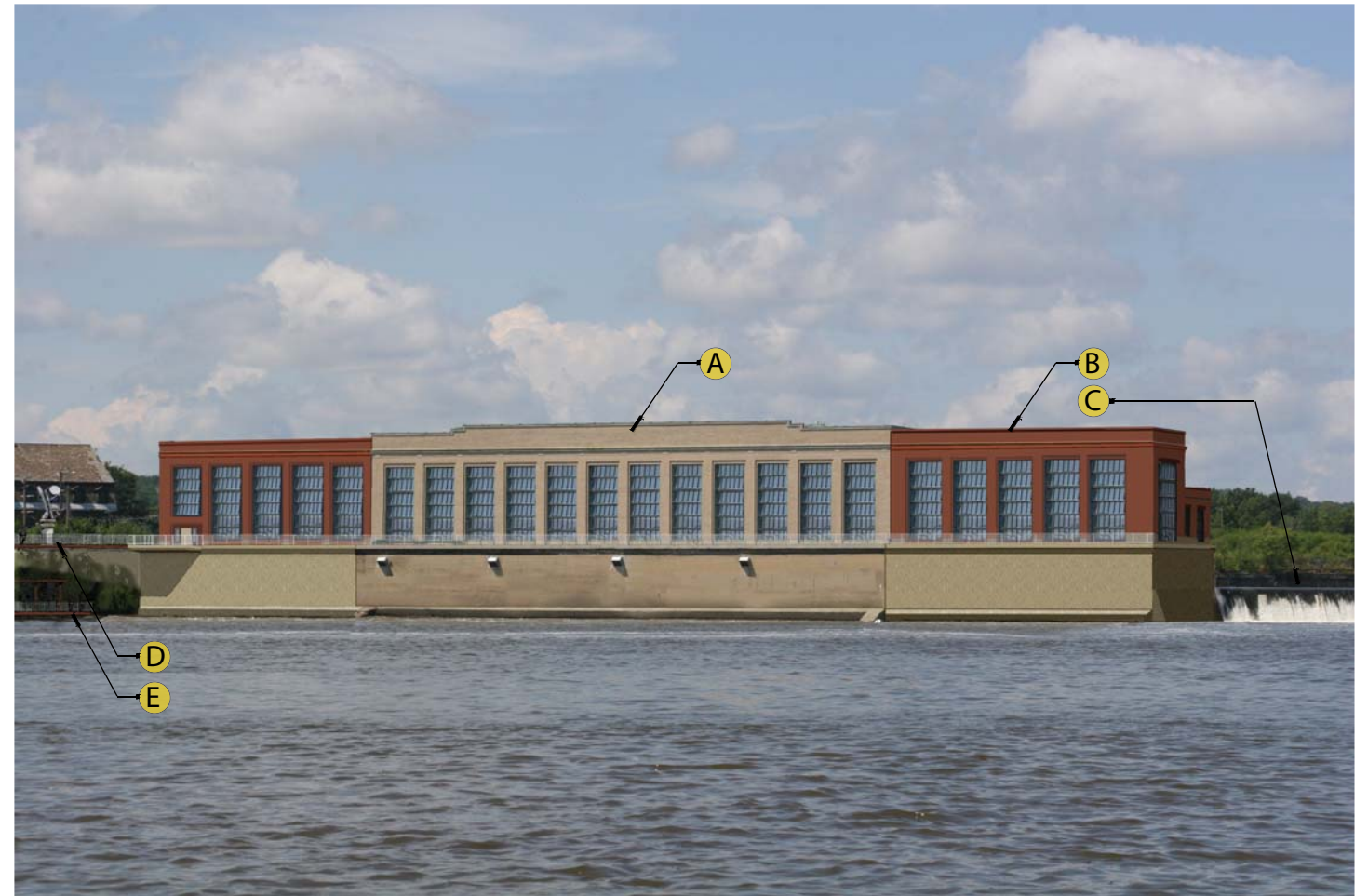


EXISTING CONDITION

- A Green Island Powerhouse
- B Forebay Wall
- C Ice Sluice
- D West Dam
- E Tailrace/ Hudson River

South Elevation
Visual



PROPOSED CONDITION

- A Green Island Powerhouse with Restored Historic Glazing
- B Powerhouse extension with weathering steel façade or classic brick
- C Modified West Dam
- D Upper Riverwalk and Park Extension
- E Lower Riverwalk and Park Extension

Green Island Hydroelectric Project
Expansion
2009