

FILE NAME = L:\MSTN\Projects\1500\1536_003 - Black Bridge Connector - Trail\NSTN\PS&E Plans\021-175977_PL-1.dgn
 DATE = 7/19/2017
 TIME = 8:42:45 AM

IN CHARGE OF _____ DESIGNED BY CMH CHECKED BY TCB DRAFTED BY TCB CHECKED BY CMH/ERBUJH CHECKED BY PJC/CMH



(A) NO PARKING ANY TIME
 R7-1
 12"x18"
 1.5 SF 645.5101
 1 EA. ITEM 645.81

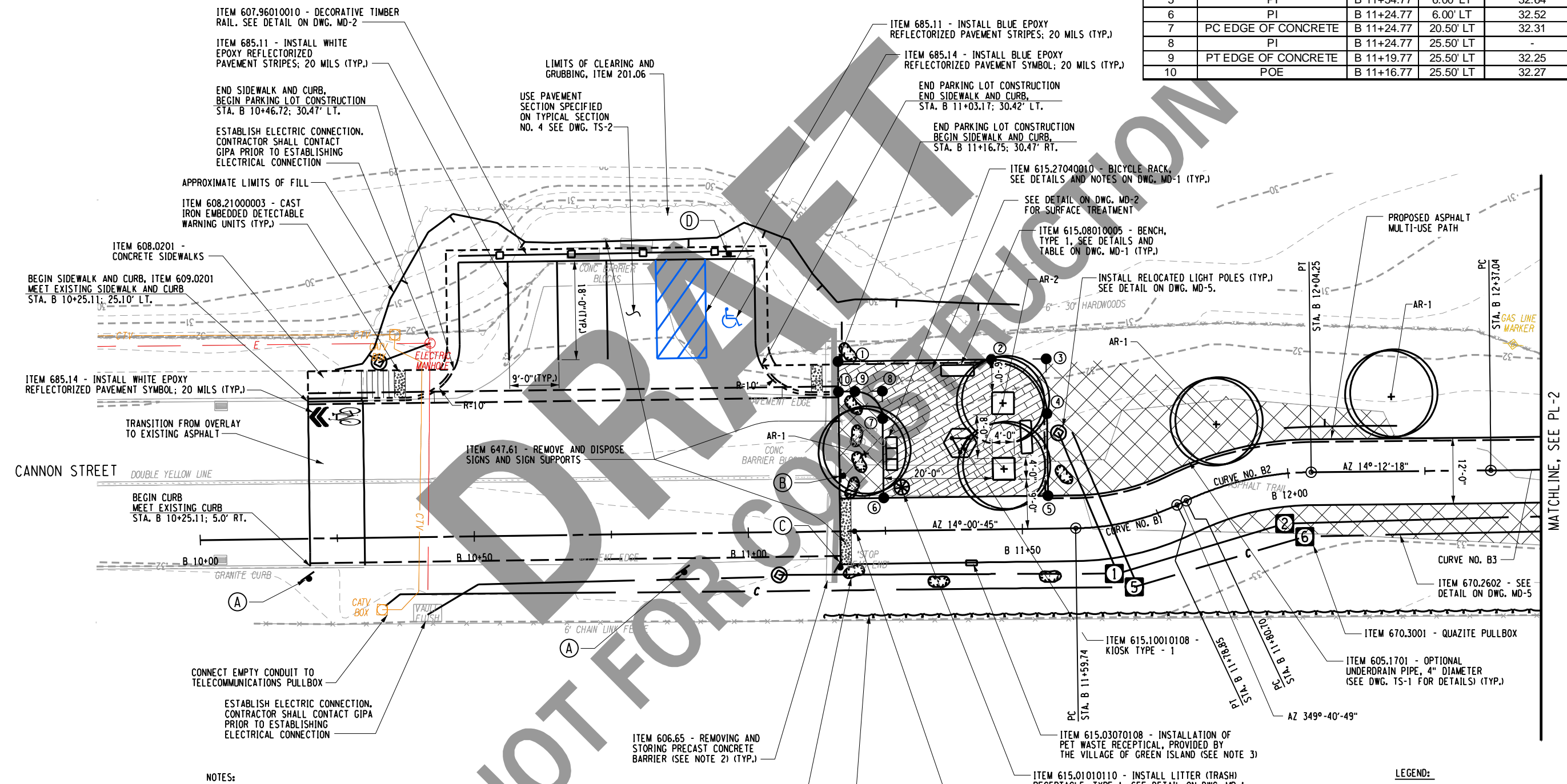
(B) DEAD END
 W14-1
 30"x30"
 6.5 SF 645.5101
 1 EA. ITEM 645.81

(C) NO MOTOR VEHICLES
 R5-3
 1 EA. ITEM 645.81
 SIGN RELOCATED FROM PL-4

(D) RESERVED PARKING
 R7-8
 12"x18"
 1.5 SF 645.5101
 1 EA. ITEM 645.81

OM4-3
 2.25 SF ITEM 645.5101

STAMPED CONCRETE LAYOUT				
NUMBER	DESCRIPTION	Station	Offset	F. G. ELEVATION
1	POB	B 11+16.77	31.00' LT	32.14
2	PC EDGE OF CONCRETE	B 11+44.77	31.00' LT	32.23
3	PI	B 11+54.77	31.00' LT	-
4	PT EDGE OF CONCRETE	B 11+54.77	21.00' LT	32.42
5	PI	B 11+54.77	6.00' LT	32.64
6	PI	B 11+24.77	6.00' LT	32.52
7	PC EDGE OF CONCRETE	B 11+24.77	6.00' LT	32.31
8	PI	B 11+24.77	25.50' LT	-
9	PT EDGE OF CONCRETE	B 11+19.77	25.50' LT	32.25
10	POE	B 11+16.77	25.50' LT	32.27

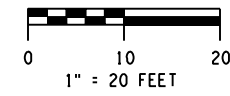


- NOTES:
- BOULDERS SHALL BE APPROXIMATELY 3FT. x 3FT. x 3FT. AND SHALL BE NATIVE TO THE AREA. SEE DETAIL ON DWG. MD-2.
 - PRECAST CONCRETE BARRIER SHALL BE DELIVERED TO THE VILLAGE DPW.
 - THE VILLAGE WILL PROVIDE PET WASTE RECEPTACLES FOR THE CONTRACTOR. THE CONTRACTOR WILL INSTALL RECEPTACLES WHERE SHOWN ON THE PLANS. SEE CONTRACT DOCUMENTS FOR INSTALLATION DETAILS ON PET WASTE RECEPTACLE
 - ITEM 615.10010208 - KIOSK, TYPE 2, SHALL BE "NPS LOW-PROFILE TRADITIONAL STYLE", AS MANUFACTURED BY ENVROSIGNS, OR EQUAL. SIGN PANEL CAN BE VIEWED AT ENVROSIGNS.COM. SIGN POST BASE SHALL BE MOUNTED TO STAMPED CONCRETE SURFACE AND SIGN PANEL SHALL BE 18" BY 24" IN SIZE.

LEGEND:

[Cross-hatched pattern] AREA OF EXISTING ASPHALT TO BE REMOVED OUTSIDE OF PROPOSED TRAIL, ITEM 203.02, 3" ITEM 610.1403 AND ITEM 610.1602

[Diagonal hatched pattern] ITEM 608.01020005 - COLORED AND IMPRINTED PORTLAND CEMENT CONCRETE. COLOR SHALL BE SOLOMON 417 - BRICK SHADE RED, SEE DETAIL ON DWG. MD-2 FOR SECTION.



19
24

NO. DATE BY REVISION

PRIDE IN GREEN ISLAND

Barton Rogudice, D.P.C.

BLACK BRIDGE CONNECTOR TRAIL
 VILLAGE OF GREEN ISLAND
 ALBANY COUNTY, NEW YORK

GENERAL PLAN - 1

SCALE: 1:20
 DATE ISSUED: 7/2017
 DRAWING PL-1

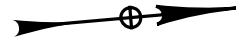
UNAUTHORIZED ALTERATION OR ADDITION TO THIS DRAWING IS A VIOLATION OF THE NEW YORK STATE EDUCATION LAW, ARTICLE 145 SECTION 7209

PIN 1759.77

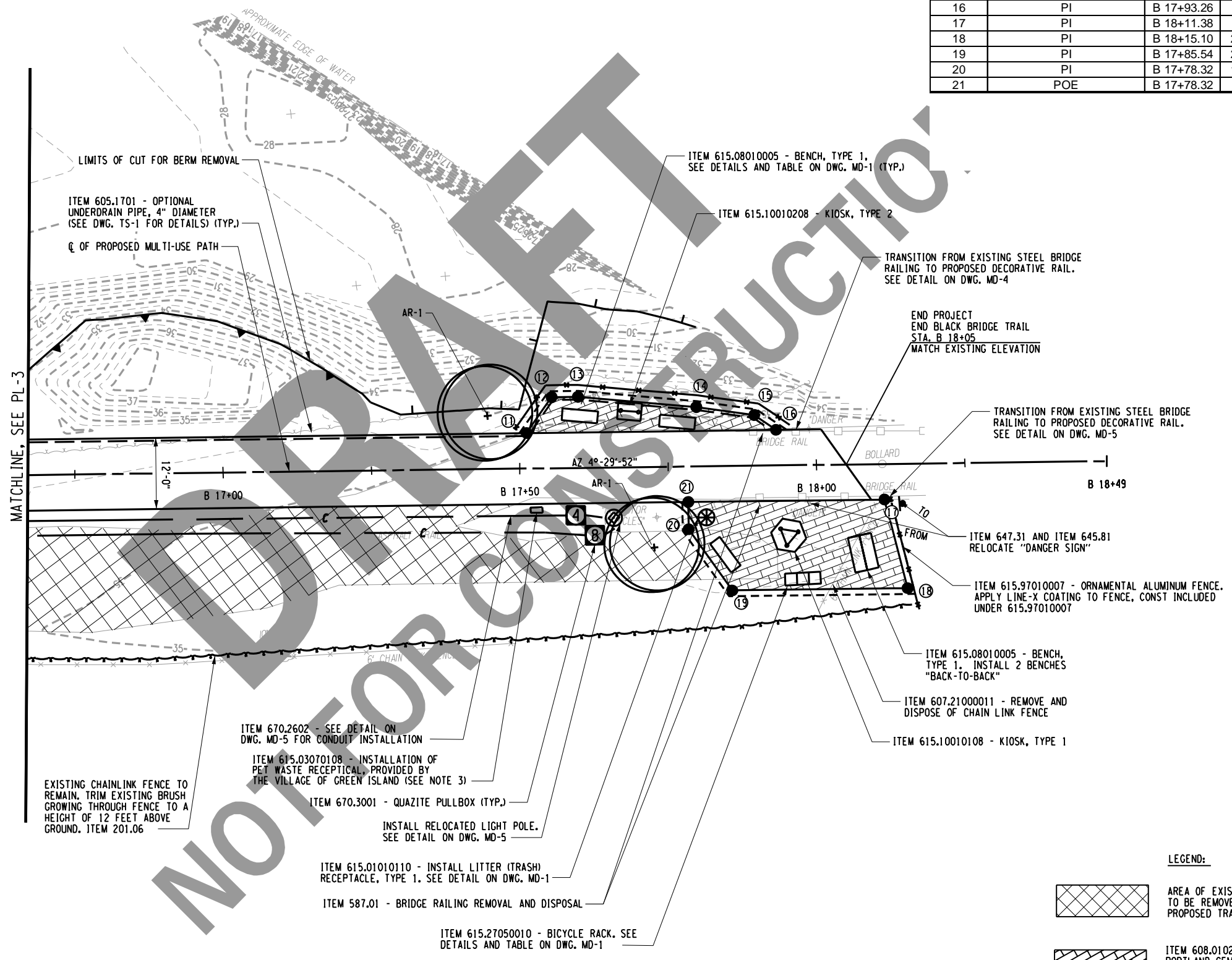
FILE NAME = L:\MSTN\Projects\1500\1536.003 - Black Bridge Connector Trail\MSTN\PS&E Plans\024-175977-PL-4.dgn
 DATE = 7/19/2017
 TIME = 8:43:28 AM

IN CHARGE OF TCB DESIGNED BY CMH CHECKED BY TCB DRAFTED BY CMH/ERBUJH CHECKED BY PJ/C/MH

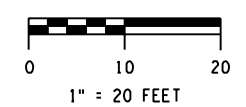
cmh
 L:\MicroStation\workspace\Plot\NYSDOT\NYSDOT_SITE_B.tbl
 L:\MicroStation\workspace\Plot\NYSDOT\NYSDOT_LL5000.B.04.08.plt



STAMPED CONCRETE LAYOUT				
NUMBER	DESCRIPTION	Station	Offset	F. G. ELEVATION
11	POB	B 17+51.23	6.00' LT	35.02
12	PI	B 17+55.51	12.00' LT	34.96
13	PI	B 17+59.95	12.00' LT	34.99
14	PI	B 17+79.88	10.00' LT	35.12
15	PI	B 17+89.62	8.55' LT	35.18
16	PI	B 17+93.26	6.00' LT	35.24
17	PI	B 18+11.38	6.00' RT	35.48
18	PI	B 18+15.10	21.00' RT	35.70
19	PI	B 17+85.54	21.00' RT	35.61
20	PI	B 17+78.32	10.42' RT	35.42
21	POE	B 17+78.32	6.00' RT	35.35



- LEGEND:
- AREA OF EXISTING ASPHALT TO BE REMOVED OUTSIDE OF PROPOSED TRAIL, ITEM 203.02
 - ITEM 608.01020005 - COLORED AND IMPRINTED PORTLAND CEMENT CONCRETE. COLOR SHALL BE SOLOMON 417 - BRICK SHADE RED, SEE DETAIL ON DWG. MD-2 FOR SECTION.



SEE DWG. PL-1 FOR NOTES

22		24	
NO.	DATE	BY	REVISION
<small>UNAUTHORIZED ALTERATION OR ADDITION TO THIS DRAWING IS A VIOLATION OF THE NEW YORK STATE EDUCATION LAW, ARTICLE 145 SECTION 7209</small>			
BLACK BRIDGE CONNECTOR TRAIL	VILLAGE OF GREEN ISLAND	ALBANY COUNTY, NEW YORK	PIN 1759.77
GENERAL PLAN - 4			
SCALE: 1:20			
DATE ISSUED: 7/2017			
DRAWING PL-4			



Black Bridge Connector Trail

PIN 1759.77



PROJECT SCHEDULE:

Bid Advertisement – July 11th, 2017

Bid Opening – August 1st, 2017

Contract Award – August 21st, 2017

Construction Begins – Early September, 2017

Substantial Completion – Mid-October, 2017

Construction Complete – Mid-November, 2017



Black Bridge Connector Trail

PIN 1759.77

AMENITIES:



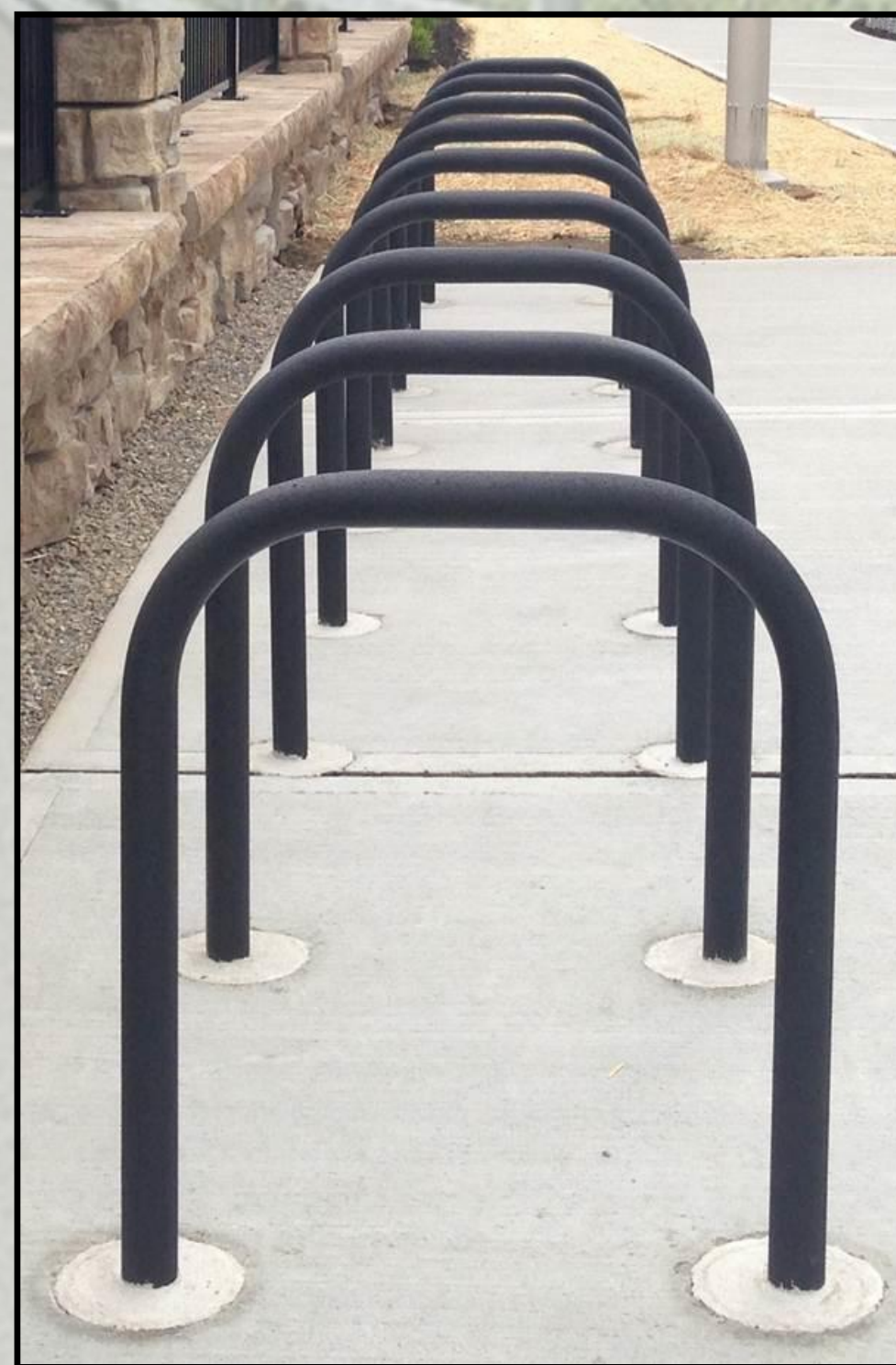
3-Sided Kiosk



Benches



L
I
G
H
T
I
N
G



Bicycle Rack



Dog Waste Receptacle



Trash Receptacle



Interpretive Panel

